



47 Marsham Street, Westminster
London SW1P

GARTON JONES.COM



47 Marsham Street, Westminster
London, SW1P

GARTON JONES.COM

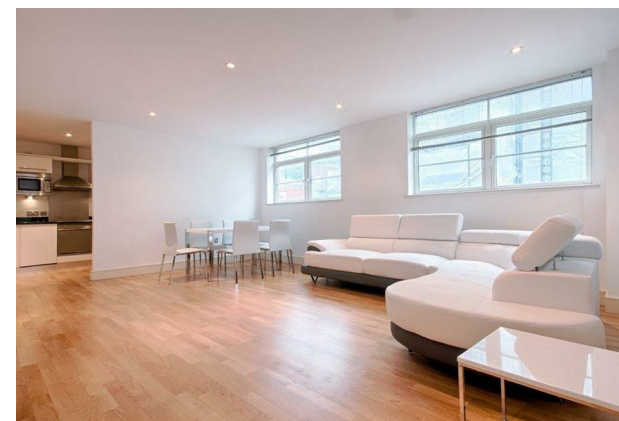
49 Marsham Street Lettings:
London +44 (0) 20 7340 0480
SW1P 3DP westminster@gartonjones.com
www.gartonjones.com

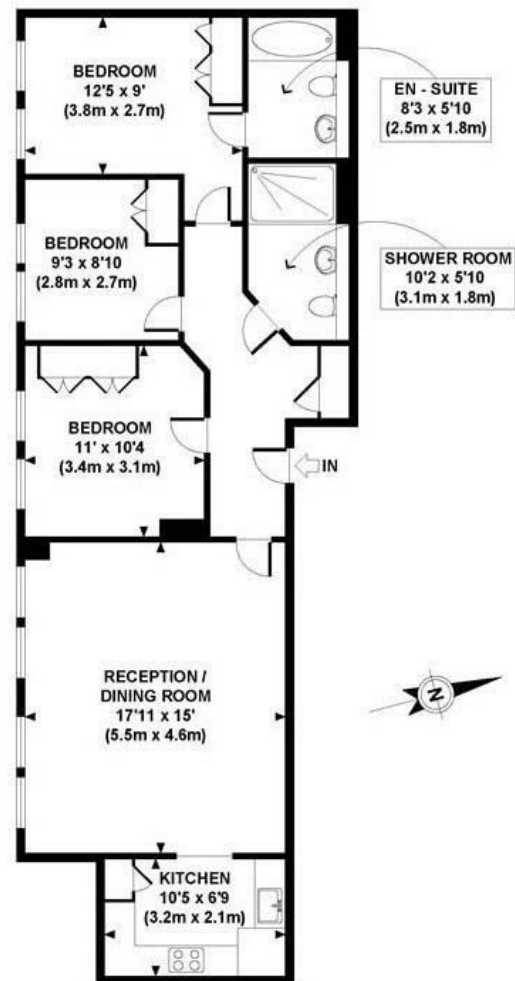
£900 Per Week

A 3 double bedroom apartment in this modern development in the heart of Westminster. The property is offered furnished and the accommodation comprises of an open plan kitchen and reception room, there are three double bedrooms all with fitted wardrobes and two bathrooms with an en-suite to the master bedroom. Residents benefit from a 24 hour concierge and gym (online booking required). The development is extremely convenient for access to many of the renowned local landmarks which include the Houses of Parliament, Westminster Abbey, Tate Britain Gallery and the River Thames. The local transport links of Victoria Station is nearby providing mainline UK services including the Gatwick Express as well as the underground services of Victoria, Pimlico, St James Park and Westminster. Just a short walk away is the Chelsea College of Arts and St Johns Smith Square Concert Halls offering a variety of classical musical performances and is therefore well positioned for access to the local shopping facilities of Victoria Street and the transport services of Victoria, St James' Park & Westminster. Please note that some of the furniture may differ slightly to the images please refer to the video tour.

Minimum Term 12 Months
Security Deposit 5 Weeks
Council Tax Westminster (Band G) £1440 Per Annum

- 3 Bedroom Apartment
- Reception Room
- 3rd Floor (Lift)
- Modern Kitchen
- 2 Bathrooms (En-Suite)
- 24 Hour Concierge
- Residents Gymnasium & Sauna (online booking required)
- St James' Park & Westminster Tube Stations Close By
- Within Easy Reach of The River Thames, Houses of Parliament & Westminster Abbey





THIRD FLOOR
GROSS INTERNAL
FLOOR AREA 882 SQ FT

APPROX. GROSS INTERNAL FLOOR AREA 882 SQ FT / 82 SQ M

